

DESCRIPTION

2 way normally closed angle seat valve pneumatically operated

PRESENTATION

- High flow rate due to the angle seat configuration
- Anti-water hammer feature with the fluid entry below the seat
- Stainless steel and corrosion resistance body
- Orientable pneumatic actuator
- Self adjusting internal seal
- Optical position indicator
- Back pressure resistance capability
- Maintenance free sealing pack
- Universal mounting position

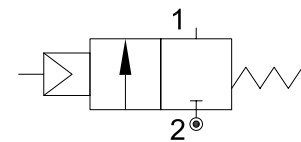


USE: Automation, heating, water, hot water, steam (180°C), aggressive and food fluid

CONNECTION: from 1/2" to 1" GAS or NPT

VALVE FEATURES

| | |
|---------------------|--------------------------|
| Fluid temperature | -40°C +180°C |
| Ambient temperature | -10°C +80°C |
| Fluid viscosity | max 600 cSt |
| Body material | Stainless steel AISI 316 |
| Seal | PTFE |
| Packing gland | PTFE/FKM |



5

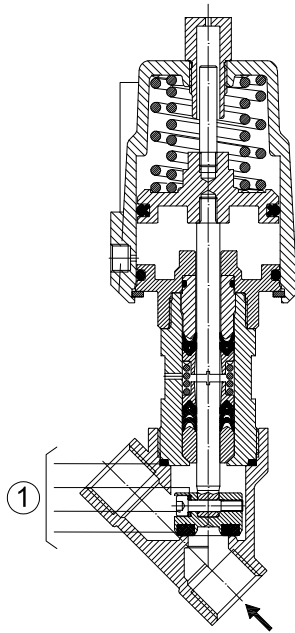
PILOT ACTUATOR FEATURES

| | |
|--------------------|---|
| Fluid | Dry or lubricated air, gases and neutral fluids |
| Fluid temperatures | max +60°C |
| Body material | Stainless steel AISI 316 |
| Gaskets | NBR |
| Actuator | Ø50 |

| CODE ① | Connection GAS - NPT | Orifice mm | Kv l/min | Actuator pilot pressure (bar) | | Differential pressure MOPD (bar) | | Max allowable pressure PS (bar) | Weight Kg |
|---------------|-------------------------|---------------|-------------|-------------------------------|-----|----------------------------------|-----|------------------------------------|--------------|
| | | | | min | max | min | max | | |
| P150D...W15/V | 1/2" | 15 | 80 | 5 | 8 | 0 | 25 | 40 | 1.6 |
| P150E...W20/V | 3/4" | 20 | 150 | | | | 15 | | 1.7 |
| P150F...W25/V | 1" | 25 | 190 | | | | 10 | | 2.1 |

① G= GAS (ISO228/1)
N= NPT (ANSI/ASME BI.20.1)

Ordination example: P150FGW25/V connection G1"

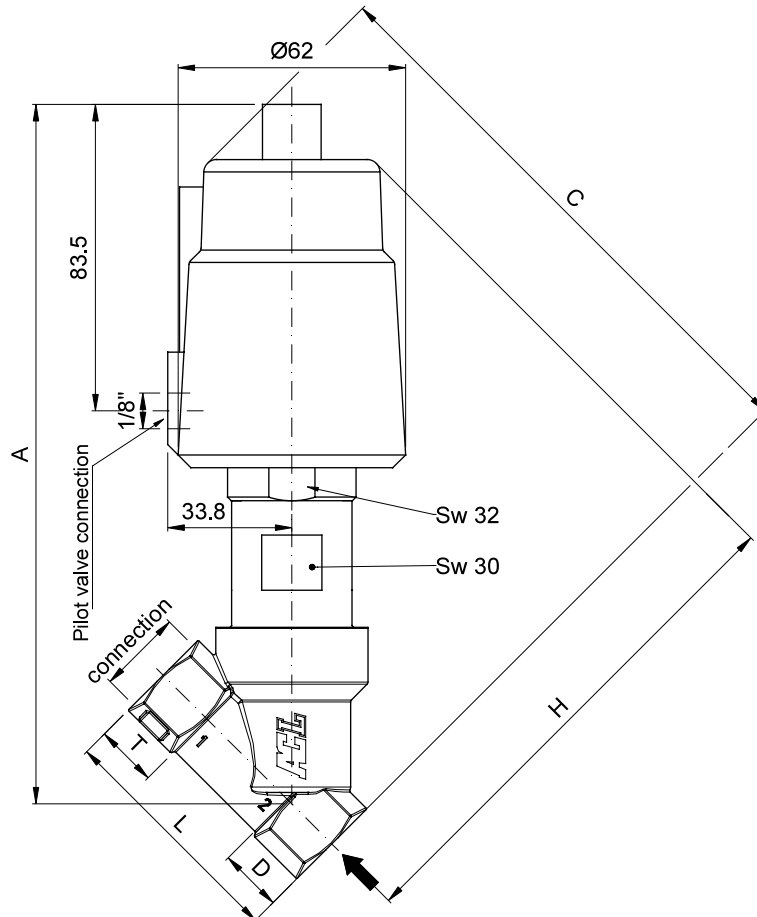


MAINTENANCE KIT

- 1. 1/2" R500078
- 3/4" R500081
- 1" R500084

OVERALL DIMENSION

| CONNECTION GAS or NPT | A mm | B mm | C mm | D mm | H mm | L mm | T mm |
|--------------------------|---------|---------|---------|---------|---------|---------|---------|
| 1/2" | 190.6 | SW 27 | 156 | 15.4 | 139.7 | 65 | 17 |
| 3/4" | 190.8 | SW 32 | 162 | 21.4 | 139.8 | 75 | 19 |
| 1" | 200.3 | SW 41 | 168 | 25 | 146.6 | 90 | 20.5 |



DESCRIPTION

2 way proportional angle seat valve pneumatically operated

PRESENTATION

- High flow rate due to the angle seat configuration
- Anti-water hammer feature with the fluid entry below the seat
- Stainless steel and corrosion resistance body
- Orientable pneumatic actuator
- Self adjusting internal seal
- Optical position indicator
- Back pressure resistance capability
- Maintenance free sealing pack
- Accurated flow control
- Universal mounting position

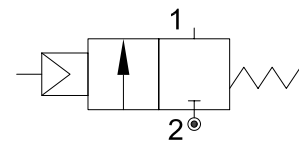


USE: Automation, heating, water, hot water, steam (180°C), aggressive and food fluid

CONNECTION: from 1/2" to 1" GAS or NPT

VALVE FEATURES

| | |
|---------------------|--------------------------|
| Fluid temperature | -40°C +180°C |
| Ambient temperature | -10°C +80°C |
| Fluid viscosity | max 600 cSt |
| Body material | Stainless steel AISI 316 |
| Seal | PTFE |
| Packing gland | PTFE/FKM |



5

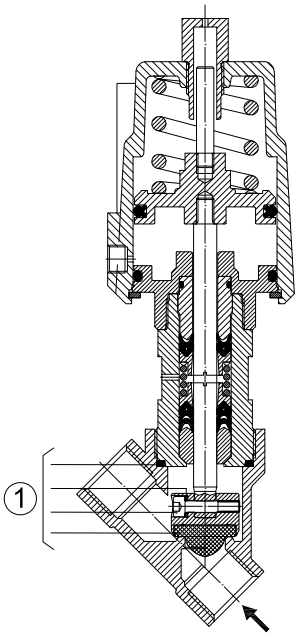
PILOT ACTUATOR FEATURES

| | |
|--------------------|---|
| Fluid | Dry or lubricated air, gases and neutral fluids |
| Fluid temperatures | max +60°C |
| Body material | Stainless steel AISI 316 |
| Gaskets | NBR |
| Actuator | Ø50 |

| CODE ① | Connection GAS - NPT | Orifice mm | Kv l/min | Actuator pilot pressure (bar) | | Differential pressure MOPD (bar) | | Max allowable pressure PS (bar) | Weight Kg |
|---------------|-------------------------|---------------|-------------|----------------------------------|-----|-------------------------------------|-----|---------------------------------------|--------------|
| | | | | min | max | min | max | | |
| P152D...W15/V | 1/2" | 15 | 70 | 0 | 8 | 0 | 16 | 40 | 1.6 |
| P152E...W20/V | 3/4" | 20 | 110 | | | | 10 | | 1.7 |
| P152F...W25/V | 1" | 25 | 130 | | | | 10 | | 2.1 |

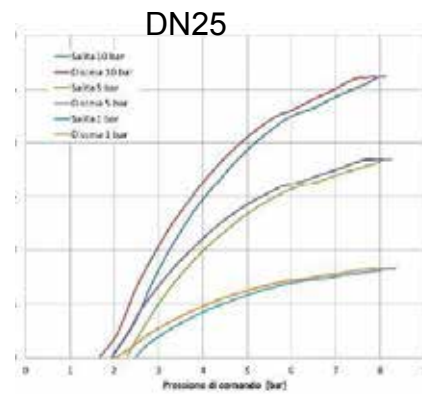
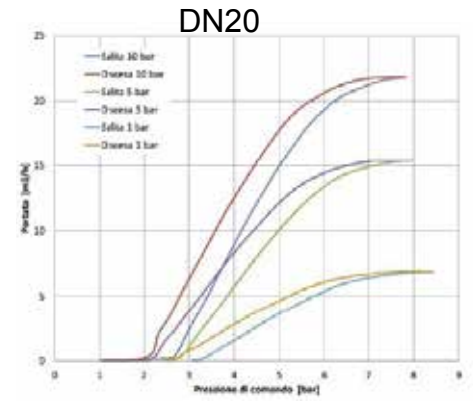
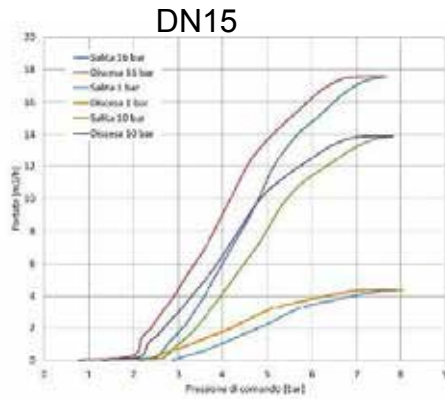
① G= GAS (ISO228/1) Ordination example: P152ENW20/V connection 3/4" NPT
 N= NPT (ANSI/ASMI BI.20.1)

Flow factor - Fluid +20°C



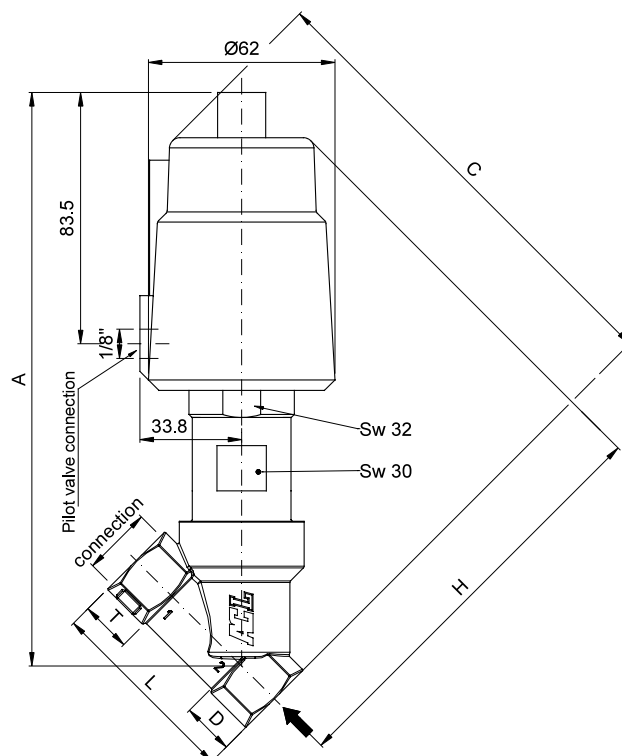
MAINTENANCE KIT

- 1. 1/2" R500078
- 3/4" R500081
- 1" R500084



OVERALL DIMENSION

| CONNECTION GAS or NPT | A mm | B mm | C mm | D mm | H mm | L mm | T mm |
|--------------------------|---------|---------|---------|---------|---------|---------|---------|
| 1/2" | 190.6 | Ch 27 | 156 | 15.4 | 139.7 | 65 | 17 |
| 3/4" | 190.8 | Ch 32 | 162 | 21.4 | 139.8 | 75 | 19 |
| 1" | 200.3 | Ch 41 | 168 | 25 | 146.6 | 90 | 20.5 |



DESCRIPTION

2 way normally closed angle seat valve pneumatically operated

PRESENTATION

- High flow rate due to the angle seat configuration
- Anti-water hammer feature with the fluid entry below the seat
- Stainless steel and corrosion resistance body
- Orientable pneumatic actuator
- Self adjusting internal seal
- Optical position indicator
- Back pressure resistance capability
- Maintenance free sealing pack
- Universal mounting position

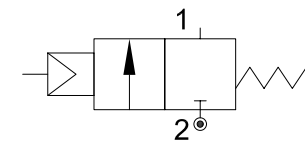


USE: Automation, heating, water, hot water, steam (180°C), aggressive and food fluid

CONNECTION: from 1/2" to 2" GAS o NPT

VALVE FEATURES

| | |
|---------------------|--------------------------|
| Fluid temperature | -40°C +180°C |
| Ambient temperature | -10°C +80°C |
| Fluid viscosity | max 600 cSt |
| Body material | Stainless steel AISI 316 |
| Seal | PTFE |
| Packing gland | PTFE/FKM |



5

PILOT ACTUATOR FEATURES

| | |
|--------------------|---|
| Fluid | Dry or lubricated air, gases and neutral fluids |
| Fluid temperatures | max +60°C |
| Body material | Polyamide 66 with 30% glass fibre |
| Gaskets | NBR |
| Actuator | Ø70 |

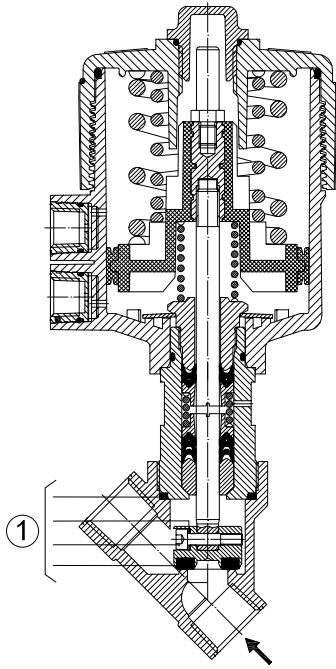
| CODE ① | Connection GAS - NPT | Orifice mm | Kv l/min | Actuator pilot pressure (bar) | | Differential pressure MOPD (bar) | | Max allowable pressure PS (bar) | Weight Kg |
|---------------|-------------------------|---------------|-------------|----------------------------------|-----|-------------------------------------|-----|---------------------------------------|--------------|
| | | | | min | max | min | max | | |
| P170D...W15/V | 1/2" | 15 | 80 | 4 | 10 | 0 | 16 | 40 | 1.4 |
| P170E...W20/V | 3/4" | 20 | 150 | | | | 10 | | 1.5 |
| P170F...W25/V | 1" | 25 | 190 | | | | 10 | | 1.8 |
| P170G...W32/V | 1"1/4 | 32 | 340 | | | | 7 | 25 | 2.4 |
| P170H...W40/V | 1"1/2 | 40 | 430 | | | | 4.5 | | 2.7 |
| P170I...W50/V | 2" | 50 | 620 | | | | 3 | 16 | 3.9 |

① G= GAS (ISO228/1) Ordination example: P170FGW25/V connection G1"
 N= NPT (ANSI/ASMI BI.20.1)



CE Approval

(Pressure equipment directive 2014/68/UE)
 for valves P170G_W32 - P170H_W40 - P170I_W50

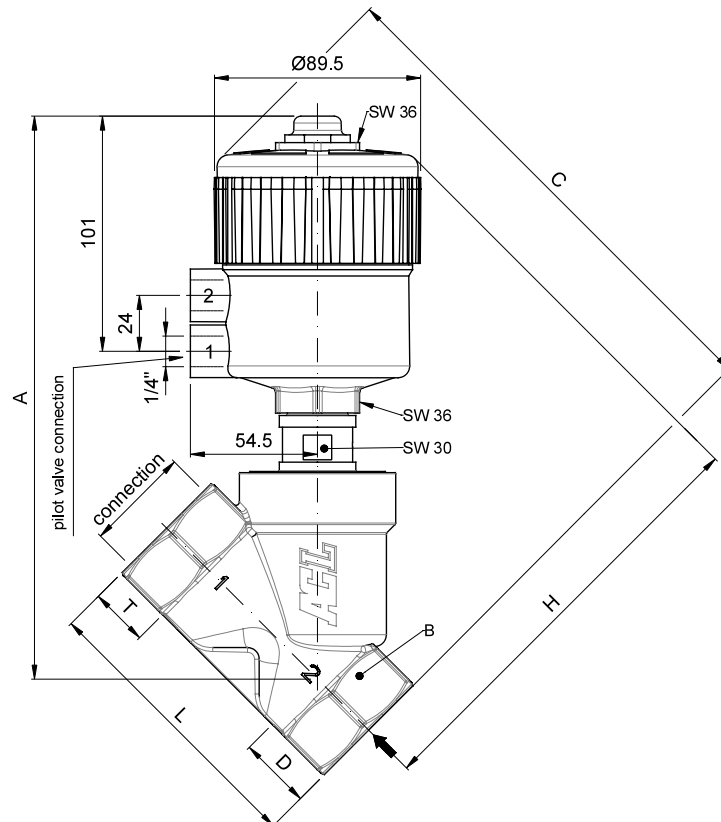


MAINTENANCE KIT

- 1. 1/2" R500045
- 3/4" R500048
- 1" R500051
- 1"1/4 R500054
- 1"1/2 R500057
- 2" R500075

OVERALL DIMENSION

| CONNECTION GAS or NPT | A mm | B mm | C mm | D mm | H mm | L mm | T mm |
|--------------------------|---------|---------|---------|---------|---------|---------|---------|
| 1/2" | 206.8 | SW 27 | 178.7 | 15.4 | 163.3 | 65 | 17 |
| 3/4" | 211.7 | SW 32 | 188.6 | 21.9 | 166.7 | 75.5 | 19 |
| 1" | 220.1 | SW 41 | 197.8 | 25.1 | 172.7 | 90 | 21 |
| 1" 1/4 | 235.9 | SW 50 | 212.3 | 28.5 | 183.8 | 110 | 24 |
| 1" 1/2 | 238.9 | SW 55 | 217.0 | 31.0 | 186 | 122 | 25.2 |
| 2" | 247.8 | SW 70 | 229.7 | 37.5 | 192.2 | 151 | 28.5 |



DESCRIPTION

2 way normally closed angle seat valve pneumatically operated for high pressure

PRESENTATION

- High flow rate due to the angle seat configuration
- Anti-water hammer feature with the fluid entry below the seat
- Stainless steel and corrosion resistance body
- Orientable pneumatic actuator
- Self adjusting internal seal
- Optical position indicator
- Back pressure resistance capability
- Maintenance free sealing pack
- Universal mounting position

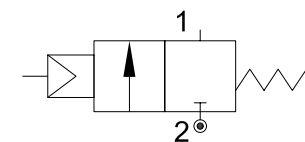


USE: Automation, heating, water, hot water, steam (180°C), aggressive and food fluid

CONNECTION: from 1/2" to 2" GAS o NPT

VALVE FEATURES

| | |
|---------------------|--------------------------|
| Fluid temperature | -40°C +180°C |
| Ambient temperature | -10°C +80°C |
| Fluid viscosity | max 600 cSt |
| Body material | Stainless steel AISI 316 |
| Seal | PTFE |
| Packing gland | PTFE/FKM |



5

PILOT ACTUATOR FEATURES

| | |
|--------------------|---|
| Fluid | Dry or lubricated air, gases and neutral fluids |
| Fluid temperatures | max +60°C |
| Body material | Polyamide 66 with 30% glass fibre |
| Gaskets | NBR |
| Actuator | Ø70 |

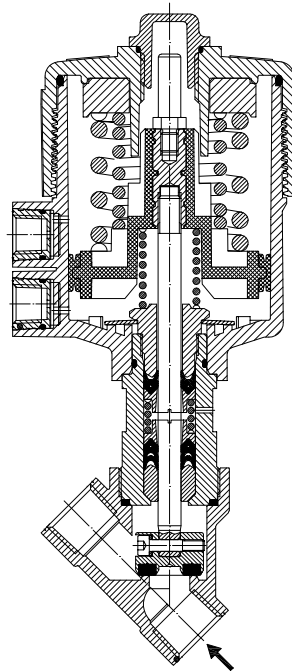
| CODE ① | Connection GAS - NPT | Orifice mm | Kv l/min | Actuator pilot pressure (bar) | | Differential pressure MOPD (bar) | | Max allowable pressure PS (bar) | Weight Kg |
|---------------|-------------------------|---------------|-------------|----------------------------------|-----|-------------------------------------|-----|---------------------------------------|--------------|
| | | | | min | max | min | max | | |
| P171D...W15/V | 1/2" | 15 | 80 | 4 | 10 | 0 | 35 | 40 | 1.4 |
| P171E...W20/V | 3/4" | 20 | 150 | | | | 25 | | 1.5 |
| P171F...W25/V | 1" | 25 | 190 | | | | 20 | | 1.8 |
| P171G...W32/V | 1"1/4 | 32 | 340 | | | | 13 | 25 | 2.4 |
| P171H...W40/V | 1"1/2 | 40 | 430 | | | | 8 | | 2.7 |
| P171I...W50/V | 2" | 50 | 620 | | | | 5.5 | 16 | 3.9 |

① G= GAS (ISO228/1) Ordination example: P171FGW25/V connection G1"
 N= NPT (ANSI/ASMI BI.20.1)



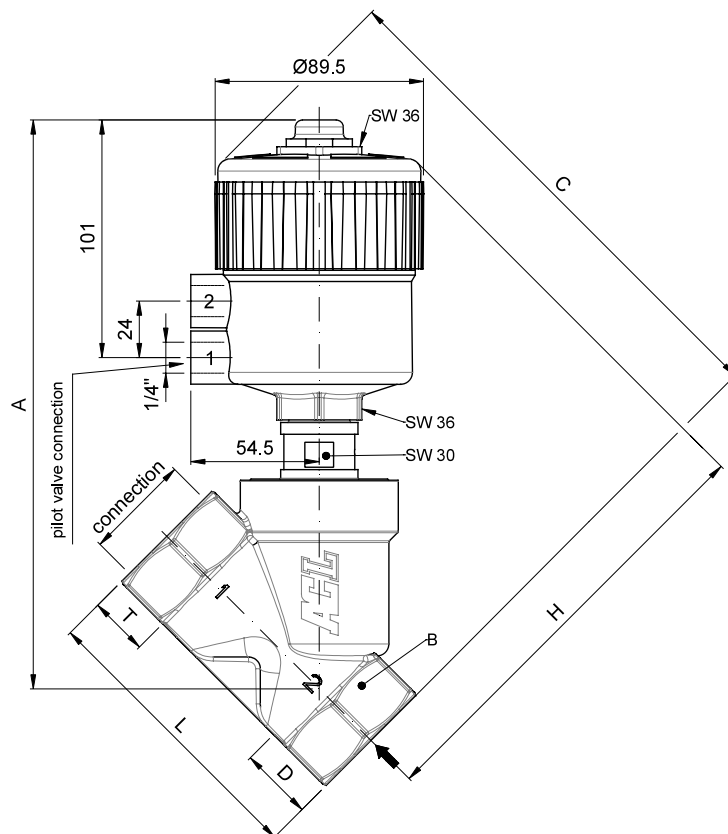
CE Approval

(Pressure equipment directive 2014/68/UE)
 for valves P171G_W32 - P171H_W40 - P171I_W50



OVERALL DIMENSION

| CONNECTION GAS or NPT | A mm | B mm | C mm | D mm | H mm | L mm | T mm |
|--------------------------|---------|---------|---------|---------|---------|---------|---------|
| 1/2" | 206.8 | SW 27 | 178.7 | 15.4 | 163.3 | 65 | 17 |
| 3/4" | 211.7 | SW 32 | 188.6 | 21.9 | 166.7 | 75.5 | 19 |
| 1" | 220.1 | SW 41 | 197.8 | 25.1 | 172.7 | 90 | 21 |
| 1" 1/4 | 235.9 | SW 50 | 212.3 | 28.5 | 183.8 | 110 | 24 |
| 1" 1/2 | 238.9 | SW 55 | 217.0 | 31.0 | 186 | 122 | 25.2 |
| 2" | 247.8 | SW 70 | 229.7 | 37.5 | 192.2 | 151 | 28.5 |



DESCRIPTION

2 way proportional angle seat valve pneumatically operated

PRESENTATION

- High flow rate due to the angle seat configuration
- Anti-water hammer feature with the fluid entry below the seat
- Stainless steel and corrosion resistance body
- Orientable pneumatic actuator
- Self adjusting internal seal
- Optical position indicator
- Back pressure resistance capability
- Maintenance free sealing pack
- Accurate flow control
- Universal mounting position

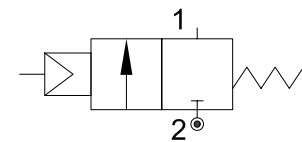


USE: Automation, heating, water, hot water, steam (180°C), aggressive and food fluid

CONNECTION: from 1/2" to 2" GAS o NPT

VALVE FEATURES

| | |
|---------------------|--------------------------|
| Fluid temperature | -40°C +180°C |
| Ambient temperature | -10°C +80°C |
| Fluid viscosity | max 600 cSt |
| Body material | Stainless steel AISI 316 |
| Seal | PTFE |
| Packing gland | PTFE/FKM |



5

PILOT ACTUATOR FEATURES

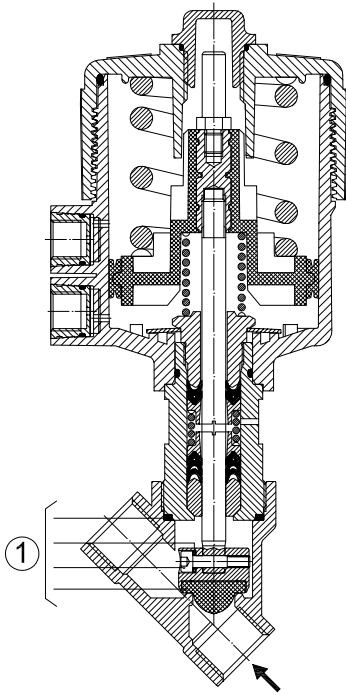
| | |
|--------------------|---|
| Fluid | Dry or lubricated air, gases and neutral fluids |
| Fluid temperatures | max +60°C |
| Body material | Polyamide 66 with 30% glass fibre |
| Gaskets | NBR |
| Actuator | Ø70 |

| CODE ① | Connection | Orifice mm | Kv l/min | Actuator pilot pressure (bar) | | Differential pressure MOPD (bar) | | Max allowable pressure PS (bar) | Weight Kg |
|---------------|------------|---------------|-------------|----------------------------------|-----|-------------------------------------|-----|---------------------------------------|--------------|
| | GAS - NPT | | | min | max | min | max | | |
| P172D...W15/V | 1/2" | 15 | 70 | 0 | 10 | 0 | 16 | 40 | 1.4 |
| P172E...W20/V | 3/4" | 20 | 130 | | | | 10 | | 1.5 |
| P172F...W25/V | 1" | 25 | 150 | | | | 10 | | 1.8 |

① G= GAS (ISO228/1)
N= NPT (ANSI/ASME B1.20.1)

Ordination example: P172ENW20/V connection 3/4" NPT

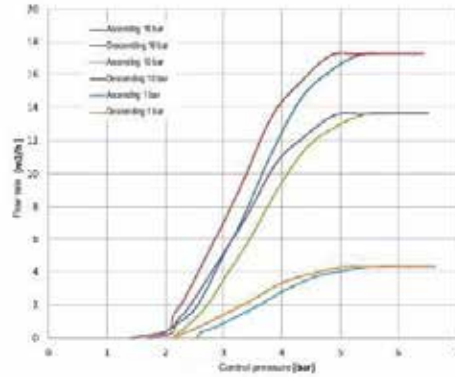
Flow factor - Fluid +20°C



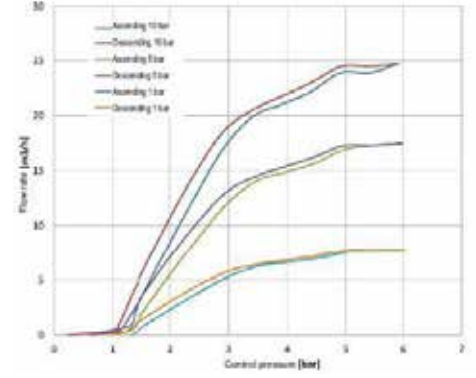
MAINTENANCE KIT

- 1. 1/2" R500078
- 3/4" R500081
- 1" R500084

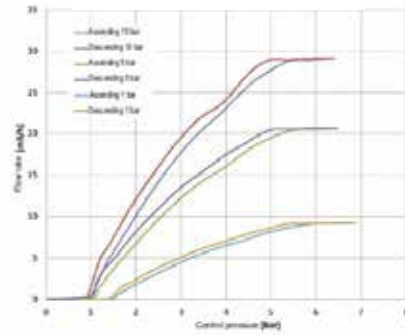
DN15



DN20

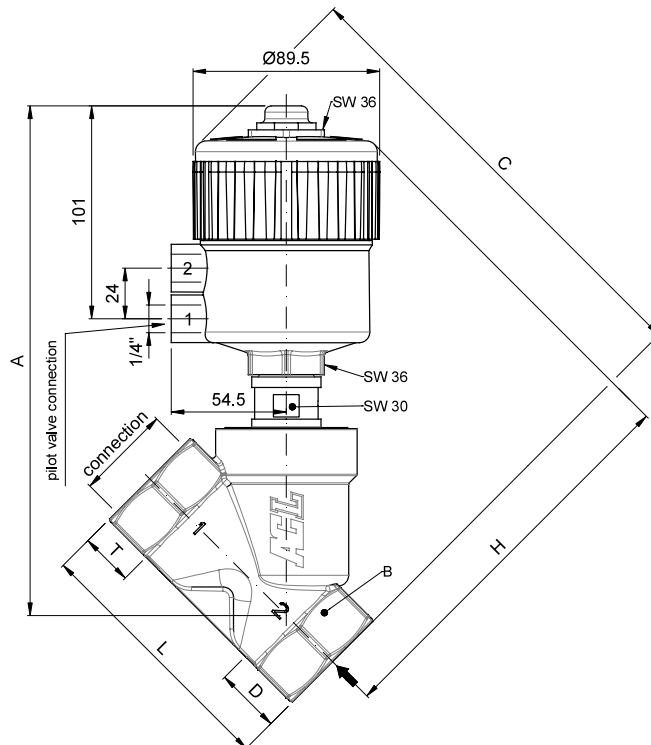


DN25



OVERALL DIMENSION

| CONNECTION GAS or NPT | A mm | B mm | C mm | D mm | H mm | L mm | T mm |
|--------------------------|---------|---------|---------|---------|---------|---------|---------|
| 1/2" | 206.8 | SW 27 | 178.7 | 15.4 | 163.3 | 65 | 17 |
| 3/4" | 211.7 | SW 32 | 188.6 | 21.9 | 166.7 | 75.5 | 19 |
| 1" | 220.1 | SW 41 | 197.8 | 25.1 | 172.7 | 90 | 21 |



DESCRIPTION

2 way normally open angle seat valve pneumatically operated

PRESENTATION

- High flow rate due to the angle seat configuration
- Anti-water hammer feature with the fluid entry below the seat
- Stainless steel and corrosion resistance body
- Orientable pneumatic actuator
- Self adjusting internal seal
- Optical position indicator
- Back pressure resistance capability
- Maintenance free sealing pack
- Universal mounting position

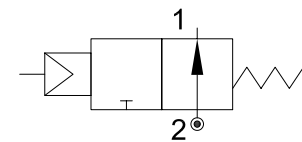


USE: Automation, heating, water, hot water, steam (180°C), aggressive and food fluid

CONNECTION: from 1/2" to 2" GAS o NPT

VALVE FEATURES

| | |
|---------------------|--------------------------|
| Fluid temperature | -40°C +180°C |
| Ambient temperature | -10°C +80°C |
| Fluid viscosity | max 600 cSt |
| Body material | Stainless steel AISI 316 |
| Seal | PTFE |
| Packing gland | PTFE/FKM |



5

PILOT ACTUATOR FEATURES

| | |
|--------------------|---|
| Fluid | Dry or lubricated air, gases and neutral fluids |
| Fluid temperatures | max +60°C |
| Body material | Polyamide 66 with 30% glass fibre |
| Gaskets | NBR |
| Actuator | Ø70 |

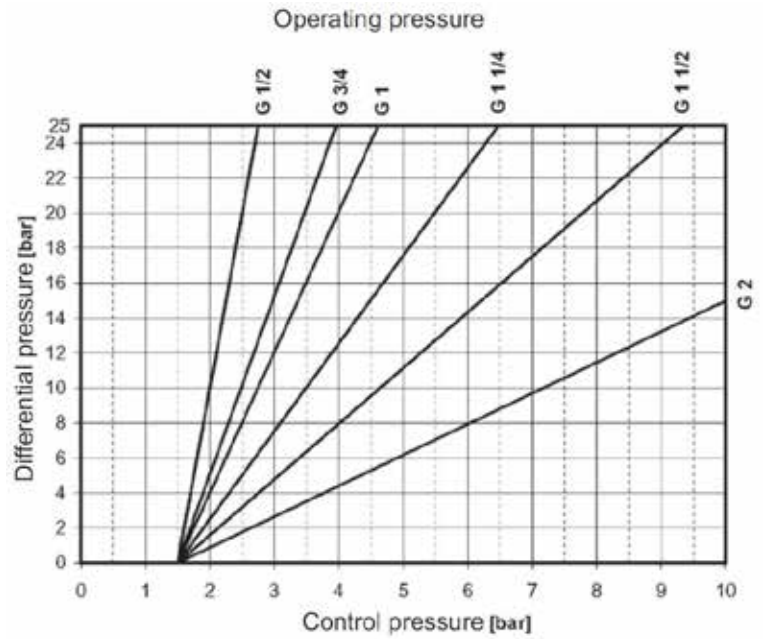
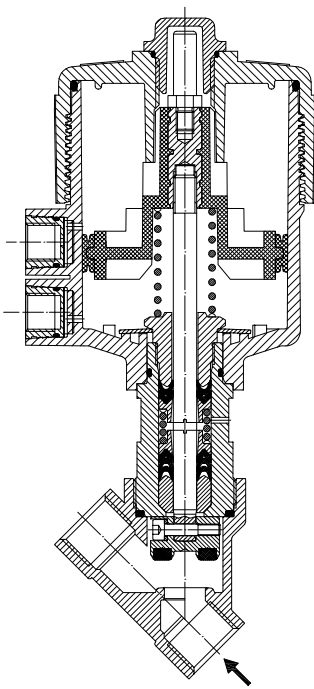
| CODE ① | Connection GAS - NPT | Orifice mm | Kv l/min | Actuator pilot pressure (bar) | | Differential pressure MOPD (bar) | | Max allowable pressure PS (bar) | Weight Kg |
|---------------|-------------------------|---------------|-------------|----------------------------------|-----|-------------------------------------|--|---------------------------------------|--------------|
| | | | | min | max | min | max | | |
| P270D...W15/V | 1/2" | 15 | 80 | 1.5 | 10 | 0 | see pressure table (next page) | 40 | 1.4 |
| P270E...W20/V | 3/4" | 20 | 150 | | | | | | 1.5 |
| P270F...W25/V | 1" | 25 | 190 | | | | | | 1.8 |
| P270G...W32/V | 1"1/4 | 32 | 340 | | | | | 2.4 | |
| P270H...W40/V | 1"1/2 | 40 | 430 | | | | | 2.7 | |
| P270I...W50/V | 2" | 50 | 620 | | | | | 3.9 | |

① G= GAS (ISO228/1) Ordination example: P270FGW25/V connection G1"
N= NPT (ANSI/ASMI BI.20.1)



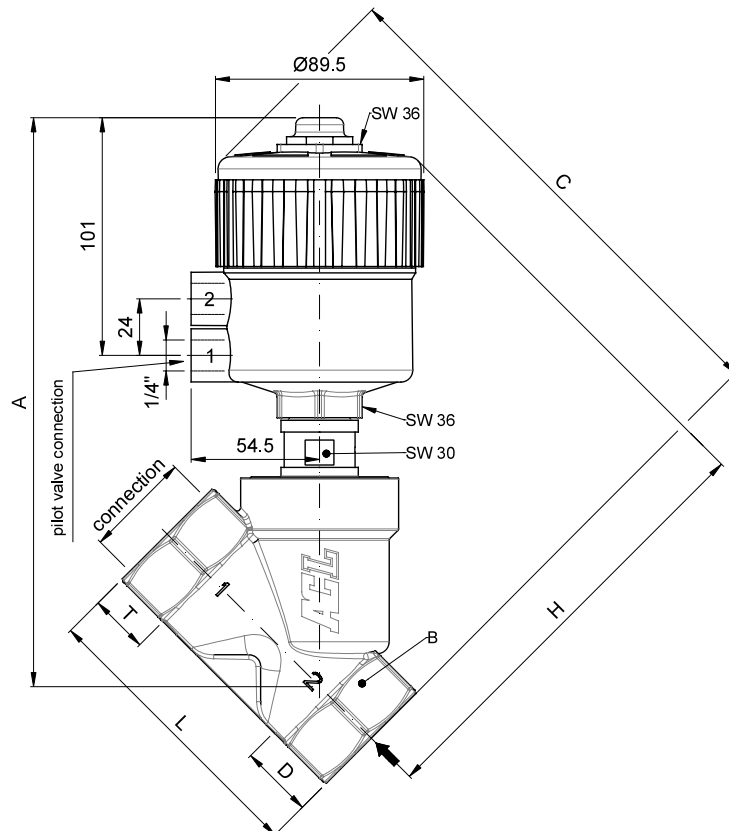
CE Approval

(Pressure equipment directive 2014/68/UE)
for valves P270G_W32 - P270H_W40 - P270I_W50



OVERALL DIMENSION

| CONNECTION GAS or NPT | A mm | B mm | C mm | D mm | H mm | L mm | T mm |
|--------------------------|---------|---------|---------|---------|---------|---------|---------|
| 1/2" | 206.8 | SW 27 | 178.7 | 15.4 | 163.3 | 65 | 17 |
| 3/4" | 211.7 | SW 32 | 188.6 | 21.9 | 166.7 | 75.5 | 19 |
| 1" | 220.1 | SW 41 | 197.8 | 25.1 | 172.7 | 90 | 21 |
| 1" 1/4 | 235.9 | SW 50 | 212.3 | 28.5 | 183.8 | 110 | 24 |
| 1" 1/2 | 238.9 | SW 55 | 217.0 | 31.0 | 186 | 122 | 25.2 |
| 2" | 247.8 | SW 70 | 229.7 | 37.5 | 192.2 | 151 | 28.5 |



DESCRIPTION

2 way angle seat valve double effect pneumatically operated

PRESENTATION

- High flow rate due to the angle seat configuration
- Anti-water hammer feature with the fluid entry below the seat
- Stainless steel and corrosion resistance body
- Orientable pneumatic actuator
- Self adjusting internal seal
- Optical position indicator
- Back pressure resistance capability
- Maintenance free sealing pack
- Universal mounting position

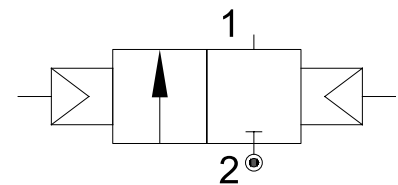


USE: Automation, heating, water, hot water, steam (180°C), aggressive and food fluid

CONNECTION: from 1/2" to 2" GAS o NPT

VALVE FEATURES

| | |
|---------------------|--------------------------|
| Fluid temperature | -40°C +180°C |
| Ambient temperature | -10°C +80°C |
| Fluid viscosity | max 600 cSt |
| Body material | Stainless steel AISI 316 |
| Seal | PTFE |
| Packing gland | PTFE/FKM |



5

PILOT ACTUATOR FEATURES

| | |
|--------------------|---|
| Fluid | Dry or lubricated air, gases and neutral fluids |
| Fluid temperatures | max +60°C |
| Body material | Polyamide 66 with 30% glass fibre |
| Gaskets | NBR |
| Actuator | Ø70 |

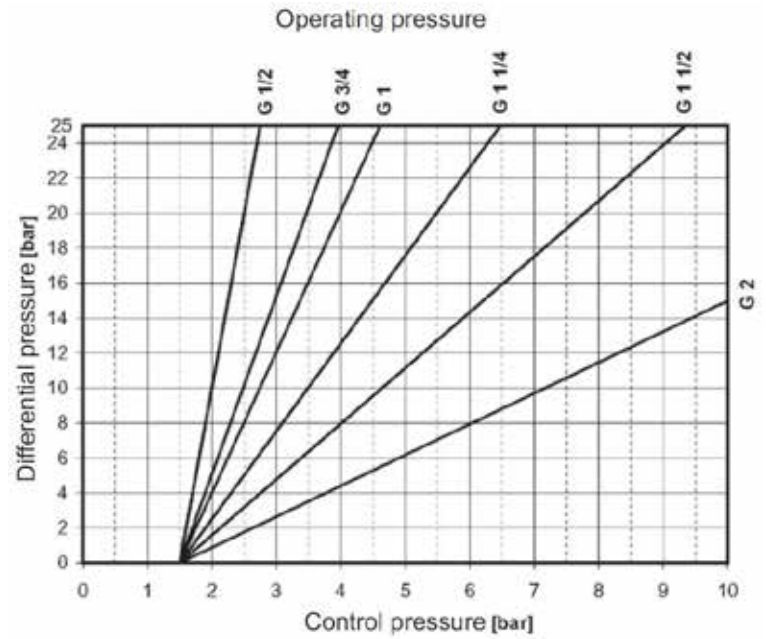
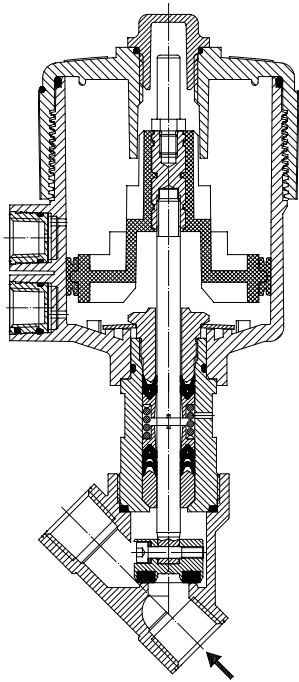
| CODE ① | Connection GAS - NPT | Orifice mm | Kv l/min | Actuator pilot pressure (bar) | | Differential pressure MOPD (bar) | | Max allowable pressure PS (bar) | Weight Kg |
|---------------|-------------------------|---------------|-------------|----------------------------------|-----|-------------------------------------|--|---------------------------------------|--------------|
| | | | | min | max | min | max | | |
| P370D...W15/V | 1/2" | 15 | 80 | 1.5 | 10 | 0 | see pressure table (next page) | 40 | 1.4 |
| P370E...W20/V | 3/4" | 20 | 150 | | | | | | 1.5 |
| P370F...W25/V | 1" | 25 | 190 | | | | | | 1.8 |
| P370G...W32/V | 1"1/4 | 32 | 340 | | | | | 2.4 | |
| P370H...W40/V | 1"1/2 | 40 | 430 | | | | | 2.7 | |
| P370I...W50/V | 2" | 50 | 620 | | | | | 3.9 | |

① G= GAS (ISO228/1) Ordination example: P370FGW25/V connection G1"
N= NPT (ANSI/ASMI BI.20.1)



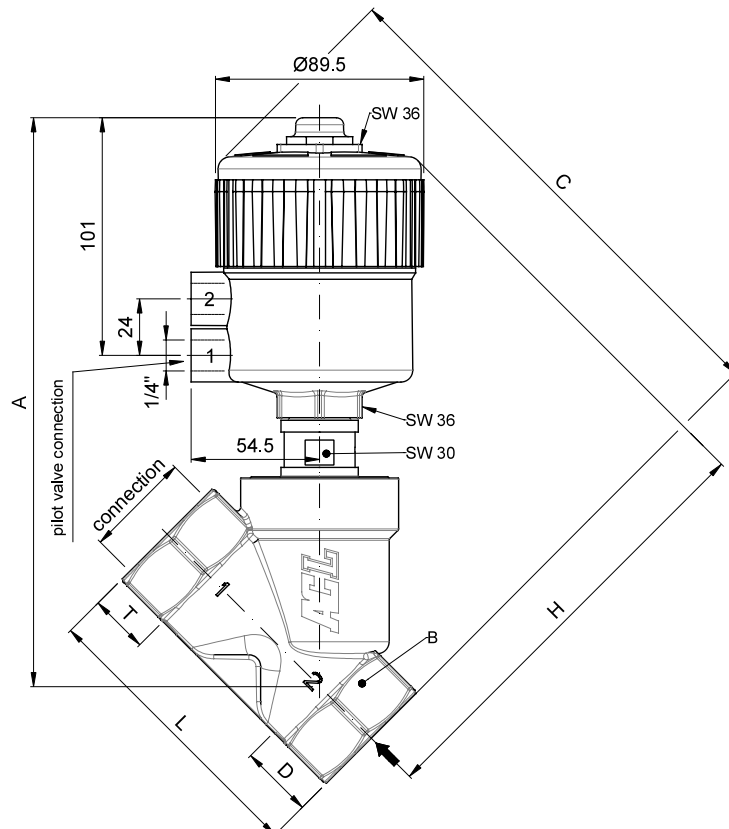
CE Approval

(Pressure equipment directive 2014/68/UE)
for valves P370G_W32 - P370H_W40 - P370I_W50



OVERALL DIMENSION

| CONNECTION GAS or NPT | A mm | B mm | C mm | D mm | H mm | L mm | T mm |
|--------------------------|---------|---------|---------|---------|---------|---------|---------|
| 1/2" | 206.8 | SW 27 | 178.7 | 15.4 | 163.3 | 65 | 17 |
| 3/4" | 211.7 | SW 32 | 188.6 | 21.9 | 166.7 | 75.5 | 19 |
| 1" | 220.1 | SW 41 | 197.8 | 25.1 | 172.7 | 90 | 21 |
| 1" 1/4 | 235.9 | SW 50 | 212.3 | 28.5 | 183.8 | 110 | 24 |
| 1" 1/2 | 238.9 | SW 55 | 217.0 | 31.0 | 186 | 122 | 25.2 |
| 2" | 247.8 | SW 70 | 229.7 | 37.5 | 192.2 | 151 | 28.5 |



DESCRIPTION

2 way normally closed angle seat valve pneumatically operated.
Inlet under seat. Welded socket.

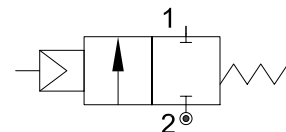
PRESENTATION

- Welded Socket Valve Acc. to DIN 11850-2
- Optional Socket Valve Acc. to DIN 11850-3
- Water Hammer effect prevention (inlet under seat)
- Protected visual position indicator
- PTFE sealing pack
- Maintenance free sealing pack
- Double acting version available on request
- Normally open version available on request
- Pilot thread: G1/8" (G1/4" for 125 mm actuators)
- Universal mounting position



USE: Packaging, Drinks Filling Machinery, Textile printing,
Pharmacy & Medical Equipment, Chemical industry,
Foaming Equipment, Water/sewage Disposal

CONNECTION: Welded Acc. to DIN 11850-2

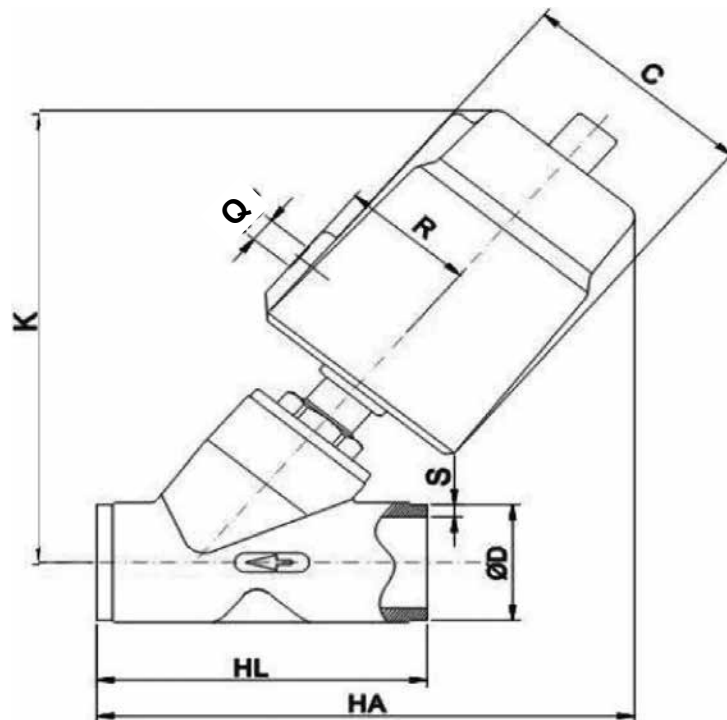


5

VALVE FEATURES

| | |
|---------------------|--|
| Fluid Pressure | Up to max 16bar |
| Control Pressure | from 3.5bar (see tables) |
| Control Fluid | Neutral gas, Air |
| Body material | Stainless steel AISI 316 |
| Sealing | PTFE |
| Actuator Material | AISI 304 or Aluminium (125 mm) |
| Actuator Size | 40mm, 50mm, 63mm, 90mm, 125mm |
| Fluids | Water, Alcohol, Oils, Fuels, Steam, Natural gases or Liquids, Organic solvents, Acids and Lyes |
| Fluid viscosity | Max 600cSt (mm ² /s) |
| Fluid temperature | -10°C to +180°C |
| Ambient temperature | -10°C to +80°C |
| Control Type | Normally closed (on request Normally open, Double acting) |

| CODE | Actuator | DN | Pilot Pressure | Max Pressure | Q | C | R | K | Welded connection | | | |
|---------------|----------|------|----------------|--------------|-------|------|----|-----|-------------------|-----|-------------|-----|
| | | | | | | | | | HA | HL | DIN 11850-2 | |
| | | | | | | | | | | | D | S |
| mm | bar | bar | mm | mm | mm | mm | mm | mm | mm | mm | mm | |
| PS140DGW15/V | Ø40 | DN15 | 4 | 0 - 13 | G1/8" | 50.5 | 27 | 112 | 118 | 70 | 19 | 1.5 |
| PS150DGW15/V | Ø50 | | 4.5 | 0 - 14 | G1/8" | 60 | 33 | 125 | 128 | | | |
| PS150EGW20/V | Ø50 | DN20 | 4.5 | 0 - 14 | G1/8" | 60 | 33 | 132 | 135 | 82 | 23 | 1.5 |
| PS150FGW25/V | Ø50 | DN25 | 4.5 | 0 - 8 | G1/8" | 60 | 33 | 136 | 150 | | | |
| PS163FGW25/V | Ø63 | | 5 | 0 - 13 | G1/8" | 75 | 41 | 162 | 175 | | | |
| PS190FGW25/V | Ø90 | | 3.5 | 0 - 14 | G1/8" | 106 | 55 | 211 | 218 | | | |
| PS163GGW32/V | Ø63 | DN32 | 5 | 0 - 6 | G1/8" | 75 | 41 | 174 | 186 | 125 | 35 | 1.5 |
| PS190GGW32/V | Ø90 | | 6 | 0 - 16 | G1/8" | 106 | 55 | 223 | 232 | | | |
| PS163HGW40/V | Ø63 | DN40 | 5 | 0 - 5 | G1/8" | 75 | 41 | 175 | 190 | 130 | 41 | 1.5 |
| PS190HGW40/V | Ø90 | | 6 | 0 - 16 | G1/8" | 106 | 55 | 223 | 235 | | | |
| PS163IGW50/V | Ø63 | DN50 | 5 | 0 - 3 | G1/8" | 75 | 41 | 183 | 206 | 155 | 53 | 1.5 |
| PS190IGW50/V | Ø90 | | 6 | 0 - 10 | G1/8" | 106 | 55 | 232 | 250 | | | |
| PS190MGW65/V | Ø90 | DN65 | 6 | 0 - 6 | G1/8" | 106 | 55 | 265 | 325 | 270 | 70 | 2 |
| PS1125MGW65/V | Ø125AL | | 5.5 | 0 - 9 | G1/4" | 170 | 85 | 315 | 365 | | | |
| PS1125RGW80/V | Ø125AL | DN80 | 5.5 | 0 - 5 | G1/4" | 170 | 85 | 327 | 380 | 284 | 85 | 2 |



DESCRIPTION

2 way normally closed angle seat valve pneumatically operated.
Inlet under seat.

PRESENTATION

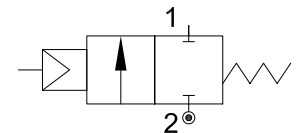
- Compact valve
- Water hammer effect prevention (inlet under seat)
- Protected visual position indicator
- PTFE sealing pack
- DN100 (G4") on request
- NPT thread on request
- Maintenance free sealing pack
- Normally open version available on request
- Double acting version available on request
- Pilot thread: G1/8" (G1/4" for 125 mm actuators)
- Universal mounting position



USE: Packaging, Drinks Filling Machinery, Textile printing,
Pharmacy & Medical Equipment, Chemical industry,
Foaming Equipment, Water/sewage Disposal

5

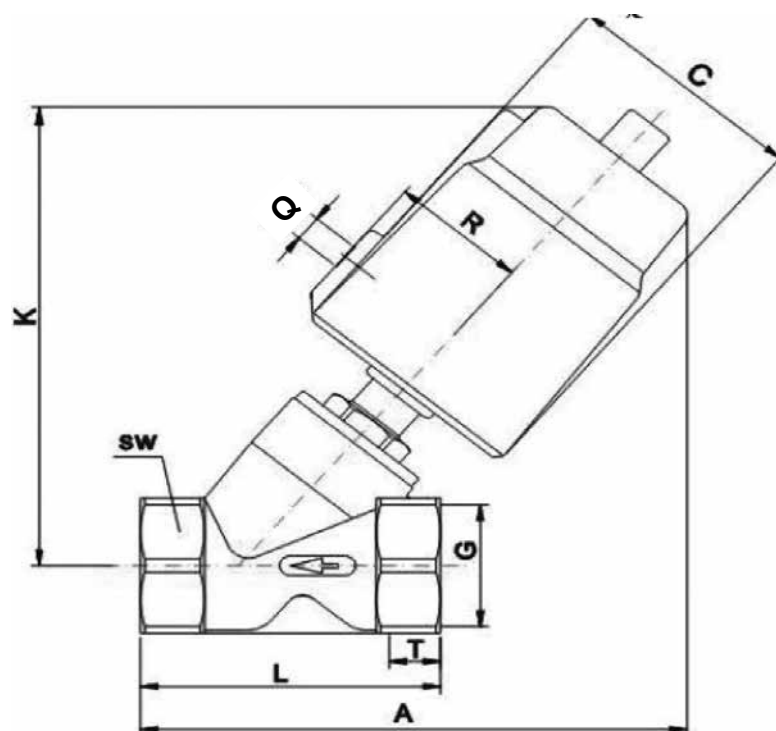
CONNECTION: Threaded (NPT, BSP)



VALVE FEATURES

| | |
|---------------------|--|
| Fluid Pressure | Up to max 16bar |
| Control Pressure | from 3.5bar (see table) |
| Control Fluid | Neutral gas, Air |
| Body material | Stainless steel AISI 316 |
| Sealing | PTFE |
| Actuator Material | AISI 304 or Aluminium (125 mm) |
| Actuator Size | 40mm, 50mm, 63mm, 90mm, 125mm |
| Fluids | Water, Alcohol, Oils, Fuels, Steam, Natural gases or Liquids, Organic solvents, Acids and Lyes |
| Fluid viscosity | Max 600cSt (mm ² /s) |
| Fluid temperature | -10°C to +180°C |
| Ambient temperature | -10°C to +80°C |
| Control Type | Normally closed, (on request Normally open, Double acting) |

| CODE | Actuator | DN | Pilot Pressure | Max Pressure | Q | C | R | K | Threaded connection | | | | | |
|---------------|----------|------|----------------|--------------|-------|------|----|-----|---------------------|----|-----|-----|-----|----|
| | | | | | | | | | G | T | A | L | SW | |
| | | mm | bar | bar | | mm | mm | mm | | mm | mm | mm | mm | mm |
| PE140CGW10/V | Ø40 | DN10 | 4 | 0 - 13 | G1/8" | 50.5 | 27 | 112 | G3/8" | 12 | 124 | 68 | 27 | |
| PE150CGW10/V | Ø50 | | 4.5 | 0 - 14 | G1/8" | 60 | 33 | 125 | | | 135 | | | |
| PE140DGW15/V | Ø40 | DN15 | 4 | 0 - 13 | G1/8" | 50.5 | 27 | 112 | G1/2" | 12 | 124 | 68 | 27 | |
| PE150DGW15/V | Ø50 | | 4.5 | 0 - 14 | G1/8" | 60 | 33 | 125 | | | 135 | | | |
| PE150EGW20/V | Ø50 | DN20 | 4.5 | 0 - 14 | G1/8" | 60 | 33 | 132 | G3/4" | 16 | 140 | 75 | 32 | |
| PE150FGW25/V | Ø50 | DN25 | 4.5 | 0 - 8 | G1/8" | 60 | 33 | 136 | G1" | 17 | 150 | 90 | 40 | |
| PE163FGW25/V | Ø63 | | 5 | 0 - 13 | G1/8" | 75 | 41 | 162 | | | 172 | | | |
| PE190FGW25/V | Ø90 | | 3.5 | 0 - 14 | G1/8" | 106 | 55 | 223 | | | 235 | | | |
| PE163GGW32/V | Ø63 | DN32 | 5 | 0 - 6 | G1/8" | 75 | 41 | 174 | G1 1/4" | 21 | 190 | 116 | 50 | |
| PE190GGW32/V | Ø90 | | 6 | 0 - 16 | G1/8" | 106 | 55 | 223 | | | 235 | | | |
| PE163HGW40/V | Ø63 | DN40 | 5 | 0 - 5 | G1/8" | 75 | 41 | 175 | G1 1/2" | 21 | 190 | 116 | 56 | |
| PE190HGW40/V | Ø90 | | 6 | 0 - 16 | G1/8" | 106 | 55 | 223 | | | 235 | | | |
| PE163IGW50/V | Ø63 | DN50 | 5 | 0 - 3 | G1/8" | 75 | 41 | 183 | G2" | 22 | 205 | 138 | 69 | |
| PE190IGW50/V | Ø90 | | 6 | 0 - 10 | G1/8" | 106 | 55 | 232 | | | 250 | | | |
| PE190MGW65/V | Ø90 | DN65 | 6 | 0 - 6 | G1/8" | 106 | 55 | 265 | G2 1/2" | 26 | 285 | 178 | 85 | |
| PE1125MGW65/V | Ø125AL | | 5.5 | 0 - 9 | G1/4" | 170 | 85 | 315 | | | 327 | | | |
| PE1125RGW80/V | Ø125AL | DN80 | 5.5 | 0 - 5 | G1/4" | 170 | 85 | 327 | G3" | 27 | 380 | 210 | 100 | |



DESCRIPTION

2 way bi-stable (double acting) angle seat valve pneumatically operated.

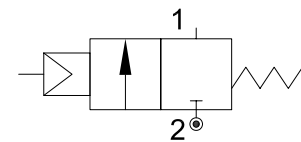
PRESENTATION

- Compact solution
- Maintenance free sealing pack
- NPT thread on request
- AISI 316 body available on request
- From 3/8" up to 2"
- 3/4" and 1 1/4" version available on request



USE: Food, Packaging, Petrochemical, Metallurgical, Spraying, Vehicles, Printing and Dyeing Machinery equipment

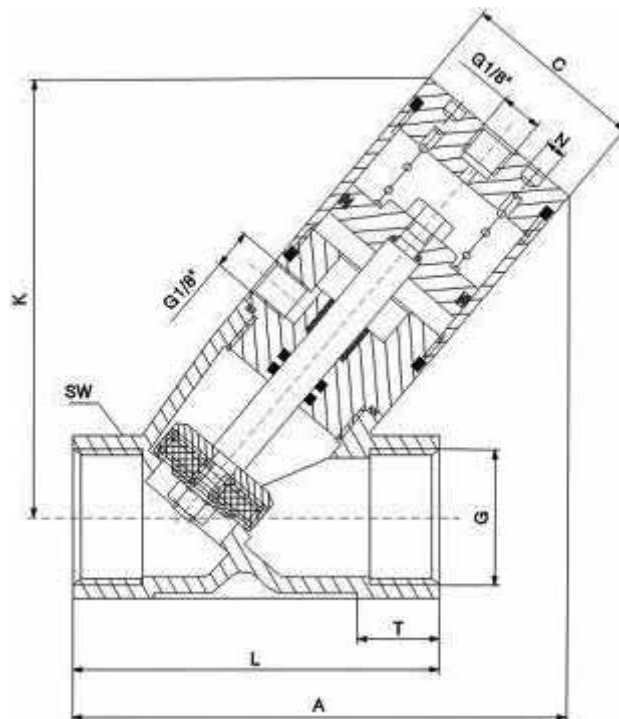
CONNECTION: Threaded (BSP, NPT)



VALVE FEATURES

| | |
|---------------------|--|
| Fluid Pressure | Up to max 10bar |
| Control Pressure | 3 - 8bar |
| Control Fluid | Neutral gases, Air |
| Body material | AISI 304 |
| Sealing | PTFE |
| Fluids | Water, Oils, Gases, Pulp and other liquids |
| Fluid viscosity | Max 600cSt (mm ² /s) |
| Fluid temperature | -10°C to +120°C |
| Ambient temperature | -10°C to +80°C |
| Control Type | Double acting |

| CODE | Actuator | DN | Pilot Pressure | Max Pressure | G | N | K | C | T | A | L | SW |
|--------------------|----------|------|----------------|--------------|---------|----|-----|----|------|-----|-----|----|
| | | mm | bar | bar | | mm | mm | mm | mm | mm | mm | mm |
| PEE332CGW10 | Ø32 | DN10 | 3 - 8 | 10 | G3/8" | 5 | 99 | 38 | 12 | 112 | 68 | 27 |
| PEE332DGW15 | Ø32 | DN15 | 3 - 8 | 10 | G1/2" | 5 | 99 | 38 | 13.5 | 112 | 68 | 27 |
| PEE340FGW25 | Ø40 | DN25 | 3 - 8 | 10 | G1" | 5 | 110 | 45 | 16.5 | 125 | 90 | 40 |
| PEE350HGW40 | Ø50 | DN40 | 3 - 8 | 10 | G1 1/2" | 5 | 138 | 55 | 19 | 158 | 116 | 56 |
| PEE363IGW50 | Ø63 | DN50 | 3 - 8 | 10 | 2" | 5 | 160 | 69 | 21.5 | 190 | 138 | 69 |



DESCRIPTION

2 way normally closed angle seat valve pneumatically operated.
Inlet under seat. Flanged connections.

PRESENTATION

- Easy to mount with flanged connection
- Water hammer effect prevention
- Protected visual position indicator
- PTFE sealing pack
- Maintenance free sealing pack
- Normally open version available on request
- Double acting version available on request
- Pilot thread: 1/8" GAS
- Universal mounting position

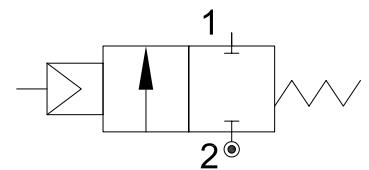


USE: Packaging, Drinks Filling Machinery, Textile printing,
Pharmacy & Medical Equipment, Chemical industry,
Foaming Equipment, Water/sewage Disposal

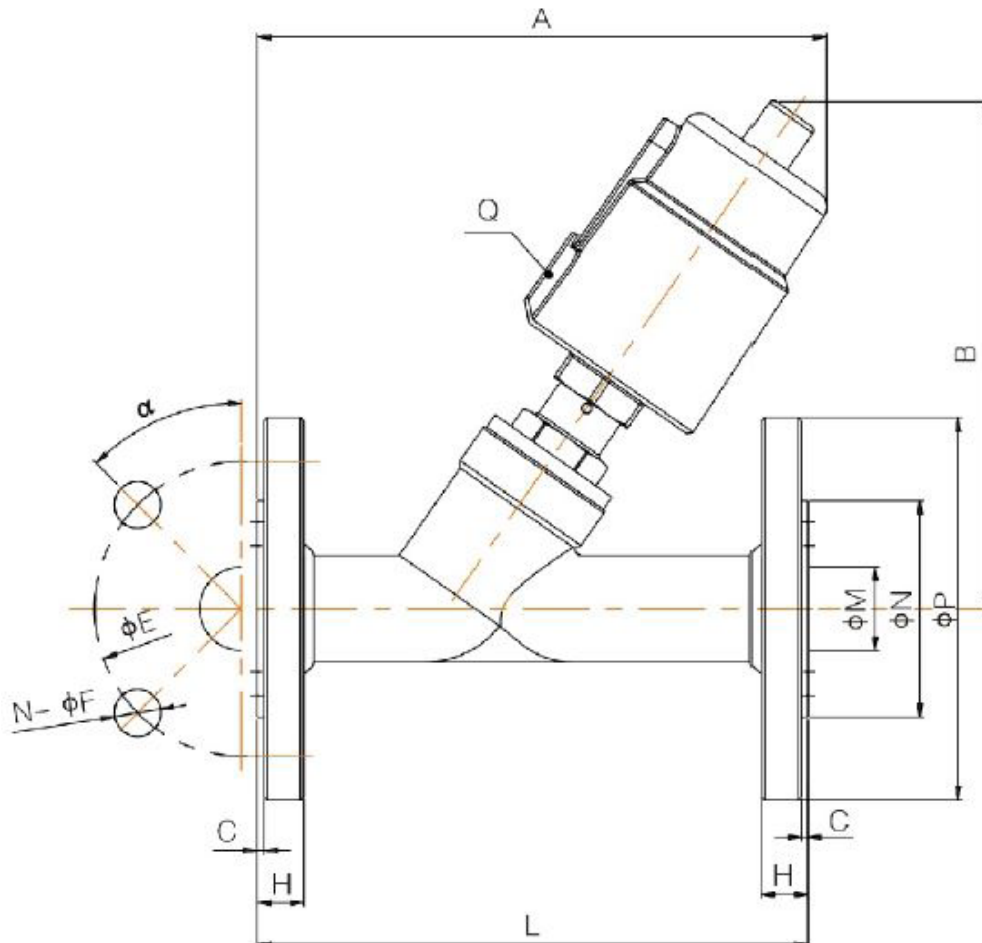
CONNECTION: Flanged acc. to DIN2576

VALVE FEATURES

| | |
|---------------------|--|
| Fluid Pressure | Up to max 16bar |
| Control Pressure | from 4bar (see table) |
| Control Fluid | Neutral gas, Air |
| Body material | Stainless steel AISI 316 |
| Sealing | PTFE |
| Actuator Material | AISI 304 |
| Actuator Size | 40mm, 50mm, 63mm, 90mm |
| Fluids | Water, Alcohol, Oils, Fuels, Steam, Natural gases or Liquids, Organic solvents, Acids and Lyes |
| Fluid viscosity | Max 600cSt (mm ² /s) |
| Fluid temperature | -10°C a +180°C |
| Ambient temperature | -10°C a +80°C |
| Control Type | Normally closed, (on request Normally open, Double acting) |



| CODE | Actuator mm | DN mm | Pilot Pressure bar | Max Pressure bar | Q G1/8 | A mm | B mm | L mm | C mm | H mm | ØE mm | n°ØF mm | ØM mm | ØN mm | ØP mm | α |
|----------------|----------------|----------|-----------------------|---------------------|-----------|---------|---------|---------|---------|---------|----------|------------|----------|----------|----------|-------|
| PF140DGW15/V | Ø40 | DN15 | 4 | 0 - 13 | G1/8 | 135 | 125 | 130 | 2 | 14 | 65 | 4-14 | 16 | 45 | 95 | 45° |
| PF150DGW15/V | Ø50 | | 4.5 | 0 - 14 | | 145 | 140 | | | | | | | | | |
| PF150EGW20/V | Ø50 | DN20 | 4.5 | 0 - 14 | G1/8 | 165 | 140 | 150 | 2 | 14 | 75 | 4-14 | 19 | 56 | 105 | 45° |
| PF150FGW25/V | Ø50 | DN25 | 4.5 | 0 - 8 | G1/8 | 170 | 145 | 160 | 2 | 14 | 85 | 4-14 | 26 | 65 | 115 | 45° |
| PF163FGW25/V | Ø63 | | 5 | 0 - 13 | | 190 | 175 | | | | | | | | | |
| PF163GGW32/V | Ø63 | DN32 | 5 | 0 - 6 | G1/8 | 190 | 188 | 180 | 2 | 16 | 100 | 4-18 | 31 | 78 | 140 | 45° |
| PF190GGW32/V | Ø90 | | 6 | 0 - 16 | | 230 | 235 | | | | | | | | | |
| PF163HGW40/V | Ø63 | DN40 | 5 | 0 - 5 | G1/8 | 206 | 190 | 200 | 3 | 16 | 110 | 4-18 | 38 | 84 | 150 | 45° |
| PF190HGW40/V | Ø90 | | 6 | 0 - 16 | | 250 | 240 | | | | | | | | | |
| PF163IGW50/V | Ø63 | DN50 | 5 | 0 - 3 | G1/8 | 235 | 195 | 230 | 3 | 16 | 125 | 4-18 | 49 | 100 | 165 | 45° |
| PF190IGW50/V | Ø90 | | 6 | 0-16 | | 277 | 245 | | | | | | | | | |
| PF190MGW65/V | Ø90 | DN65 | 6 | 0 - 6 | G1/8 | 330 | 280 | 290 | 3 | 18 | 145 | 4-18 | 66 | 120 | 185 | 45° |
| PF1125MGW65/V | Ø125 | | 5.5 | 0 - 9 | | G1/4 | 375 | | | | | | | | | |
| PF1125RGW80/V | Ø125 | DN80 | 5.5 | 0 - 5 | G1/4 | 380 | 355 | 310 | 3 | 20 | 160 | 8-18 | 78 | 135 | 200 | 22.5° |
| PF1125SGW100/V | Ø125 | DN100 | 5.5 | 0 - 2.5 | G1/4 | 420 | 395 | 350 | 3 | 20 | 180 | 8-18 | 96 | 155 | 215 | 22.5° |



DESCRIPTION

2 way bi-stable (double acting) pneumatically operated valve.
Modular assembling.

PRESENTATION

- Best choice for fluid mixing
- Flanged connection modularity
- Water hammer effect prevention
- Protected visual position indicator
- PTFE sealing pack
- Maintenance free sealing pack
- Normally open version available on request
- Pilot thread: G1/8"
- Universal mounting position



USE: Packaging, Drinks Filling Machinery, Textile printing,
Pharmacy & Medical Equipment, Chemical industry,
Foaming Equipment, Water/sewage Disposal

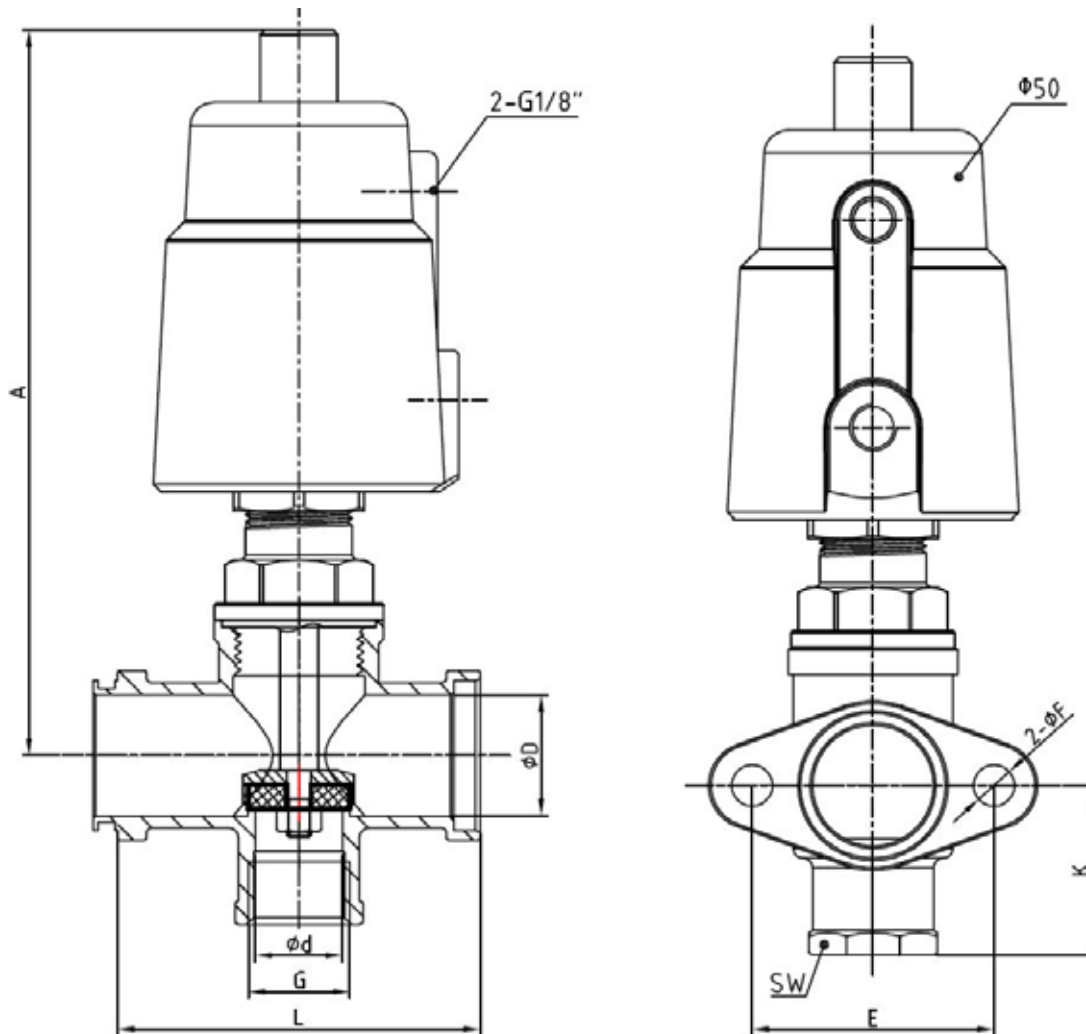
CONNECTION: Threaded (BSP, NPT)

| | |
|---|--------------|
| CONNECTION KIT: Inlet plate (plate+OR+screws+nuts) | cod.14913000 |
| Modules connection kit (OR+screws+nuts) | cod.14914000 |
| End plate (plate+OR+screws+nuts) | cod.14915000 |

VALVE FEATURES

| | |
|---------------------|--|
| Fluid Pressure | Up to max 14bar |
| Control Pressure | from 4.5bar (see table) |
| Control Fluid | Neutral gas, Air |
| Body material | Stainless steel AISI 316 |
| Sealing | PTFE |
| Actuator Material | AISI 304 |
| Actuator Size | 50mm |
| Fluids | Water, Alcohol, Oils, Fuels, Steam, Natural gases or Liquids, Organic solvents, Acids and Lyes |
| Fluid viscosity | Max 600cSt (mm ² /s) |
| Fluid temperature | -10°C to +180°C |
| Ambient temperature | -10°C to +80°C |
| Control Type | Double acting |

| CODE | DN (ØD) | Pilot Pressure | Max Pressure | A | L | K | 2-ØF | E | ØD | Ød | G | SW |
|--------------|---------|----------------|--------------|-----|----|----|------|----|----|----|------|----|
| | mm | bar | bar | mm | mm | mm | mm | mm | mm | mm | | mm |
| PM150DGW15/V | DN20 | 4.5 | 0 - 14 | 153 | 76 | 35 | 8.5 | 50 | 25 | 18 | 1/2" | 27 |
| PM150FGW25/V | DN25 | 4.5 | 0 - 8 | 153 | 90 | 46 | 8.5 | 57 | 32 | 24 | 1" | 39 |



DESCRIPTION

2 way normally closed angle seat valve pneumatically operated.
Inlet under seat. Tri-Clamp connections.

PRESENTATION

- Tri-Clamp connection Acc.to ISO2852-1993
- Water hammer effect prevention
- Protected visual position indicator
- PTFE sealing pack
- Maintenance free sealing pack
- Normally open version available on request
- Double acting version available on request
- Pilot thread: 1/8" GAS
- Universal mounting position



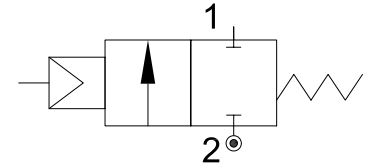
USE: Packaging, Drinks Filling Machinery, Textile printing,
Pharmacy & Medical Equipment, Chemical industry,
Foaming Equipment, Water/sewage Disposal

CONNECTION: Tri-Clamp ISO2852-1993

VALVE FEATURES

| | |
|---------------------|--|
| Fluid Pressure | Up to max 14bar |
| Control Pressure | from 4bar (see table) |
| Control Fluid | Neutral gas, Air |
| Body material | Stainless steel AISI 316 |
| Sealing | PTFE |
| Actuator Material | AISI 304 |
| Actuator Size | 40mm, 50mm, 63mm, 90mm |
| Fluids | Water, Alcohol, Oils, Fuels, Steam, Natural gases or Liquids, Organic solvents, Acids and Lyes |
| Fluid viscosity | Max 600cSt (mm ² /s) |
| Fluid temperature | -10°C a +180°C |
| Ambient temperature | -10°C a +80°C |
| Control Type | Normally closed, (on request Normally open, Double acting) |

5



| CODE | Actuator mm | DN mm | Pilot Pressure bar | Max Pressure bar | Q | A mm | K mm | Tri-clamp connection | | | | |
|--------------|----------------|----------|-----------------------|---------------------|-------|---------|---------|----------------------|---------|---------|----------|----------|
| | | | | | | | | L mm | C mm | B mm | Ød mm | ØD mm |
| PT140DGW15/V | Ø40 | DN15 | 4 | 13 | G1/8" | 130 | 115 | 80 | 19 | 27.5 | 15 | 34 |
| PT150DGW15/V | Ø50 | | 4.5 | 14 | G1/8" | 140 | 126 | | | | | |
| PT150EGW20/V | Ø50 | DN20 | 4.5 | 14 | G1/8" | 148 | 126 | 102 | 25 | 43.5 | 21 | 50.5 |
| PT150FGW25/V | Ø50 | DN25 | 4.5 | 8 | G1/8" | 165 | 140 | 130 | 32 | 43.5 | 27 | 50.5 |
| PT163FGW25/V | Ø63 | | 5 | 13 | G1/8" | 188 | 166 | | | | | |
| PT163GGW32/V | Ø63 | DN32 | 5 | 6 | G1/8" | 200 | 174 | 146 | 37 | 43.5 | 31 | 50.5 |
| PT163HGW40/V | Ø63 | DN40 | 5 | 5 | G1/8" | 210 | 175 | 160 | 40 | 56.5 | 33 | 64 |
| PT163IGW50/V | Ø63 | DN50 | 5 | 3 | G1/8" | 221 | 185 | 175 | 53 | 56.5 | 45 | 64 |
| PT190IGW50/V | Ø90 | DN50 | 6 | 10 | G1/8" | 265 | 235 | | | | | |

